

Responses are anonymous

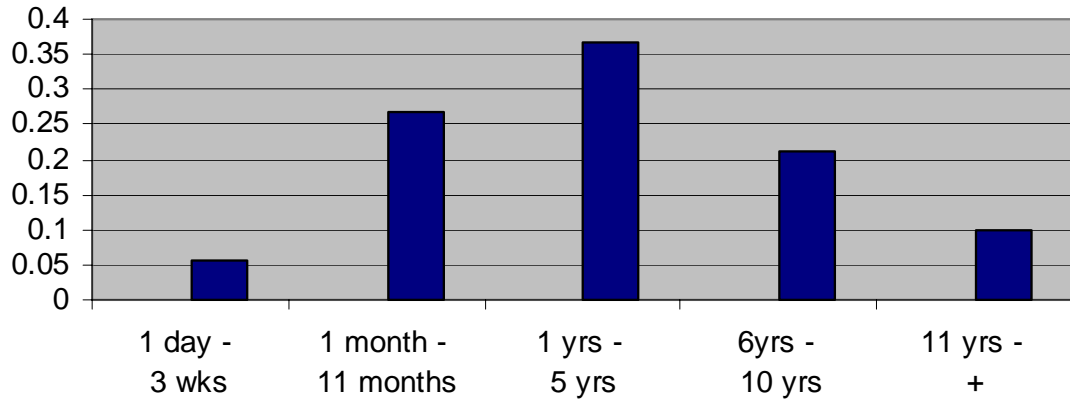


Methadone Patient Survey

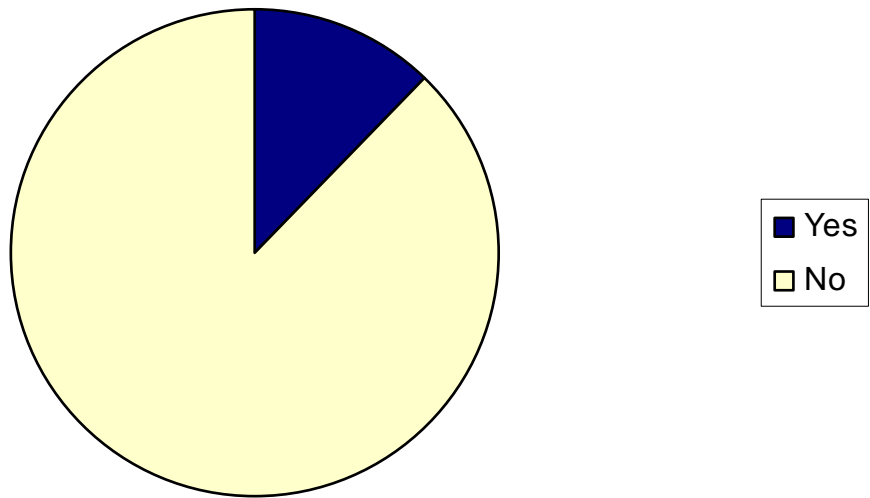
91 Responses

**Conducted
May 2007**

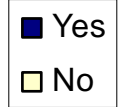
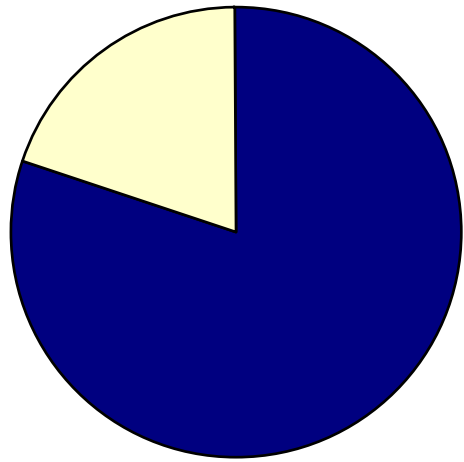
How long have you been in the Methadone program?



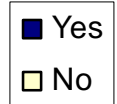
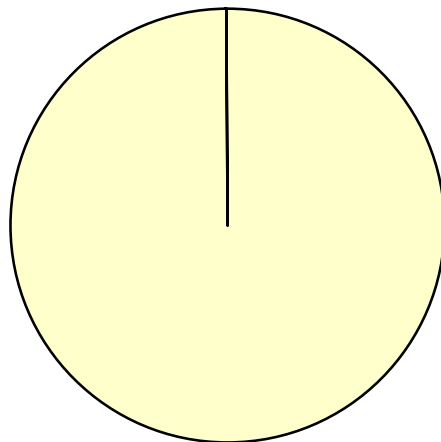
Are you currently using illicit (street) opiates?



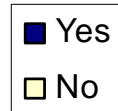
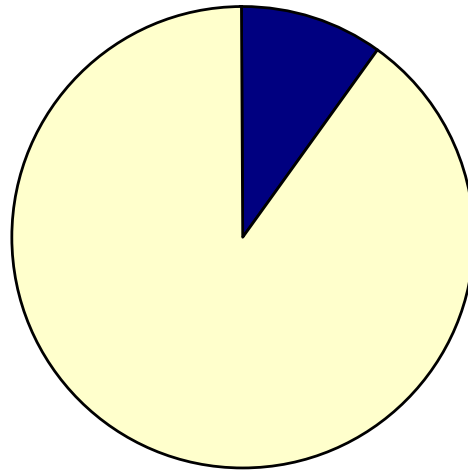
If yes, have you decreased your use of illicit opiates since you started Methodone?



Are you sharing needles?

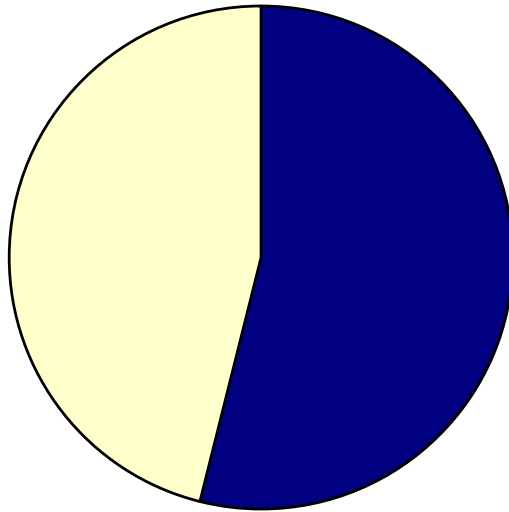


Have you been arrested since you started the program?



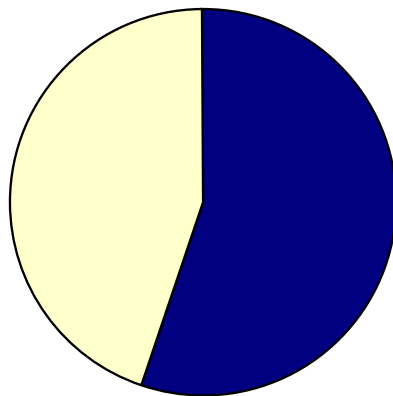
If yes, why were you arrested?
Responses included; theft and drugs

Are you employed?



■ Yes
□ No

If yes, did you get your current job since starting the program?



■ Yes
□ No